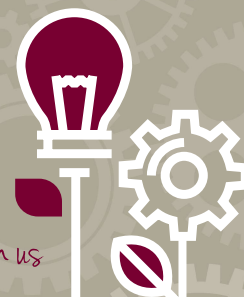


# retirement.

Grow your knowledge with us



**Length of course:** 2 hours 30 minutes

## Summary

To encourage a positive and realistic approach to a financially secure retirement and help employees make informed choices about retirement.

## Aimed at

Employees, regardless of grade considering retirement or for those who have just started thinking about retirement plans.

## Learning objectives

- Explore changes in lifestyles
- Identify where income is expected to come from and how it is taxed differently in retirement
- Understand the State Pension and different types of workplace pensions
- Learn about the risks and reward involved in savings and investments
- Discover why increased life expectancy escalates the dangers of inflation and how to combat it
- Find out how to ensure your estate is passed to your intended beneficiaries
- Understand Inheritance Tax
- Understand the next steps and where to receive further guidance and regulated financial advice

## Course structure

### Changes to lifestyles

- What does retirement mean?
- Changes in the use of personal time

### Income needs in retirement

- Considerations for retirement
- Life expectancy
- Taxation in retirement
- Income and expenditure in retirement

### The State Pension

- Explaining the State Pension
- State Pension eligibility
- State Pension forecast

### Inflation in retirement

- How inflation can erode the value of money over time

### Employer specific workplace pension

- Overview of the scheme(s)
- Retirement income options
- Options for increasing benefits
- Adult survivor's pension

### Savings and investments

- Financial goals
- Understanding investment risk
- Risk and return in the real world

### Taxation

- Income tax in retirement
- Tax allowances

### Estate Planning

- Inheritance Tax
- Wills and intestacy
- Power of Attorney